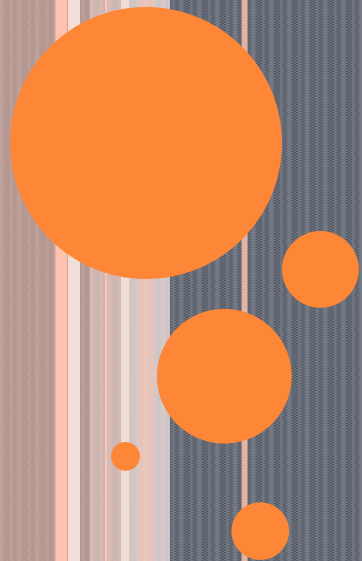


PRACTICAL OBSTETRICS

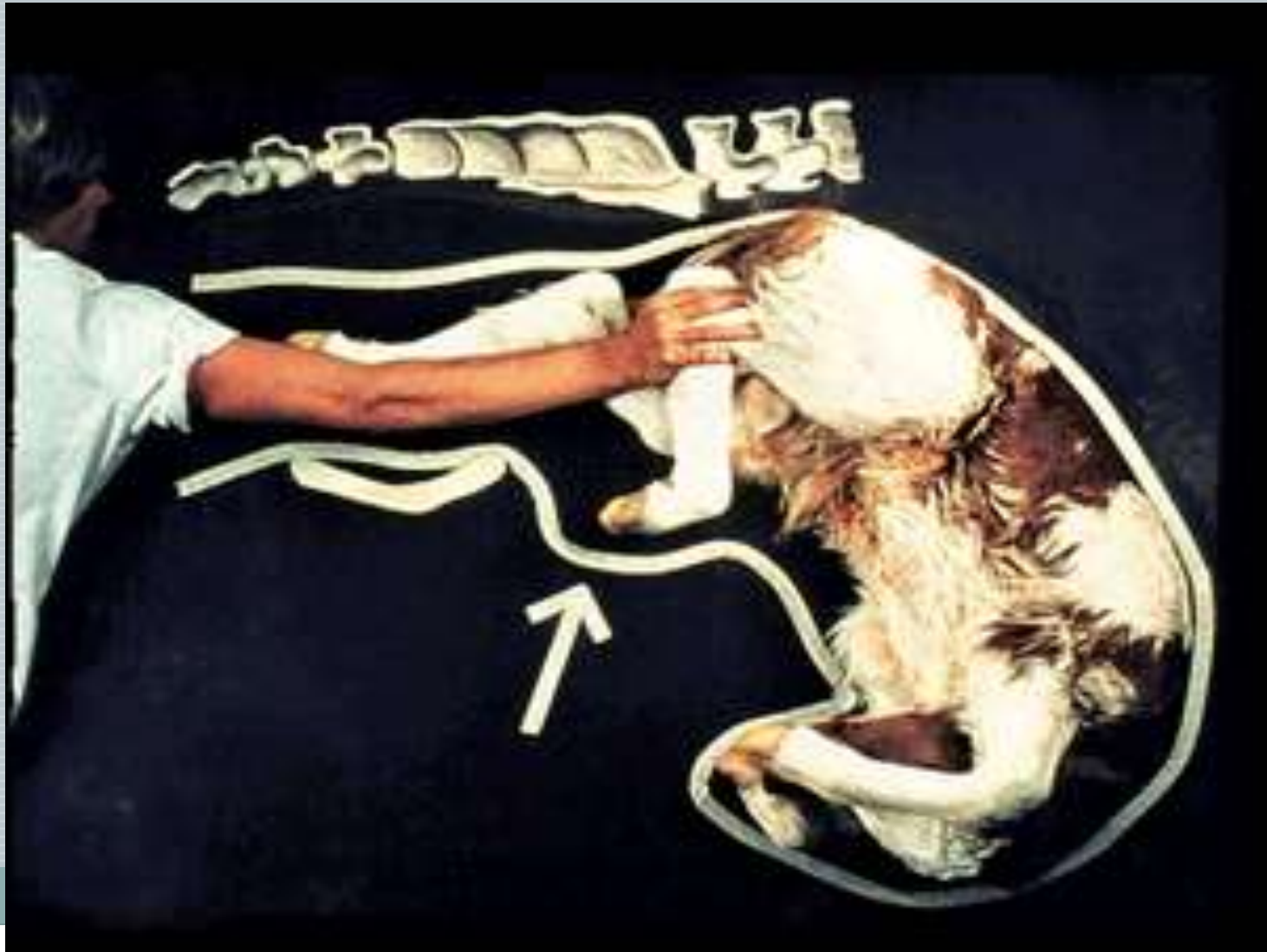
# Obstetrical maneuvers

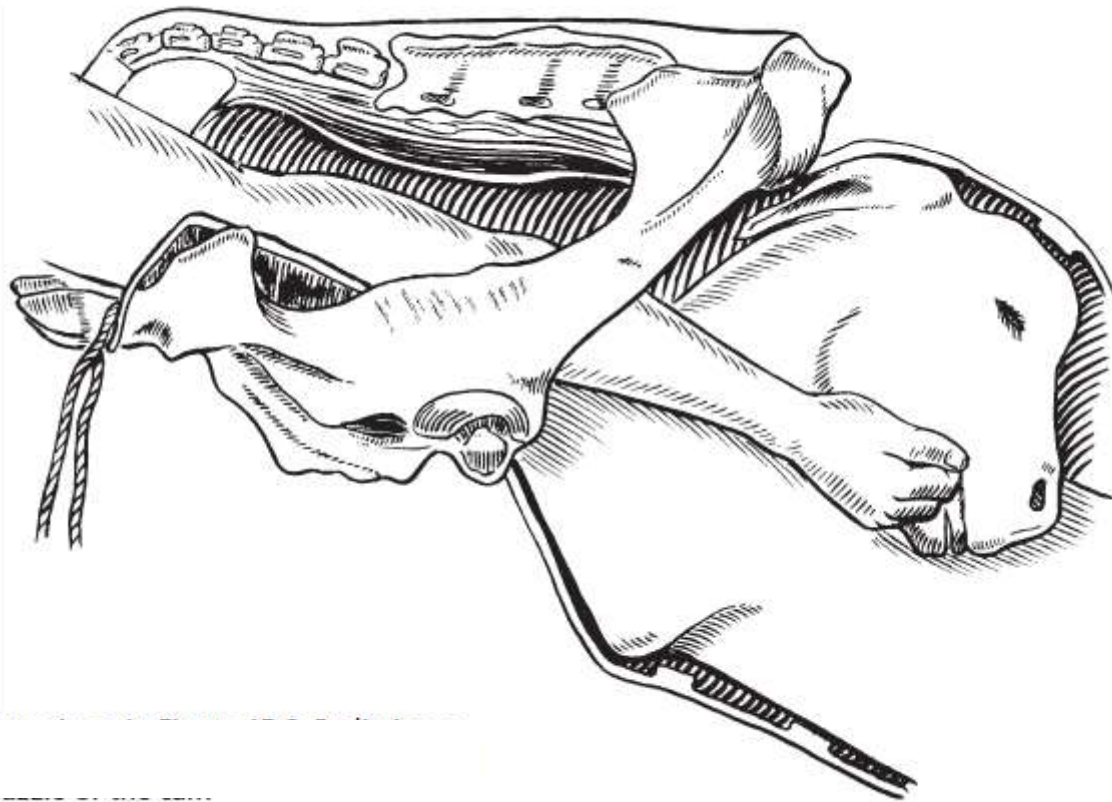
Dr. Yaseen M.



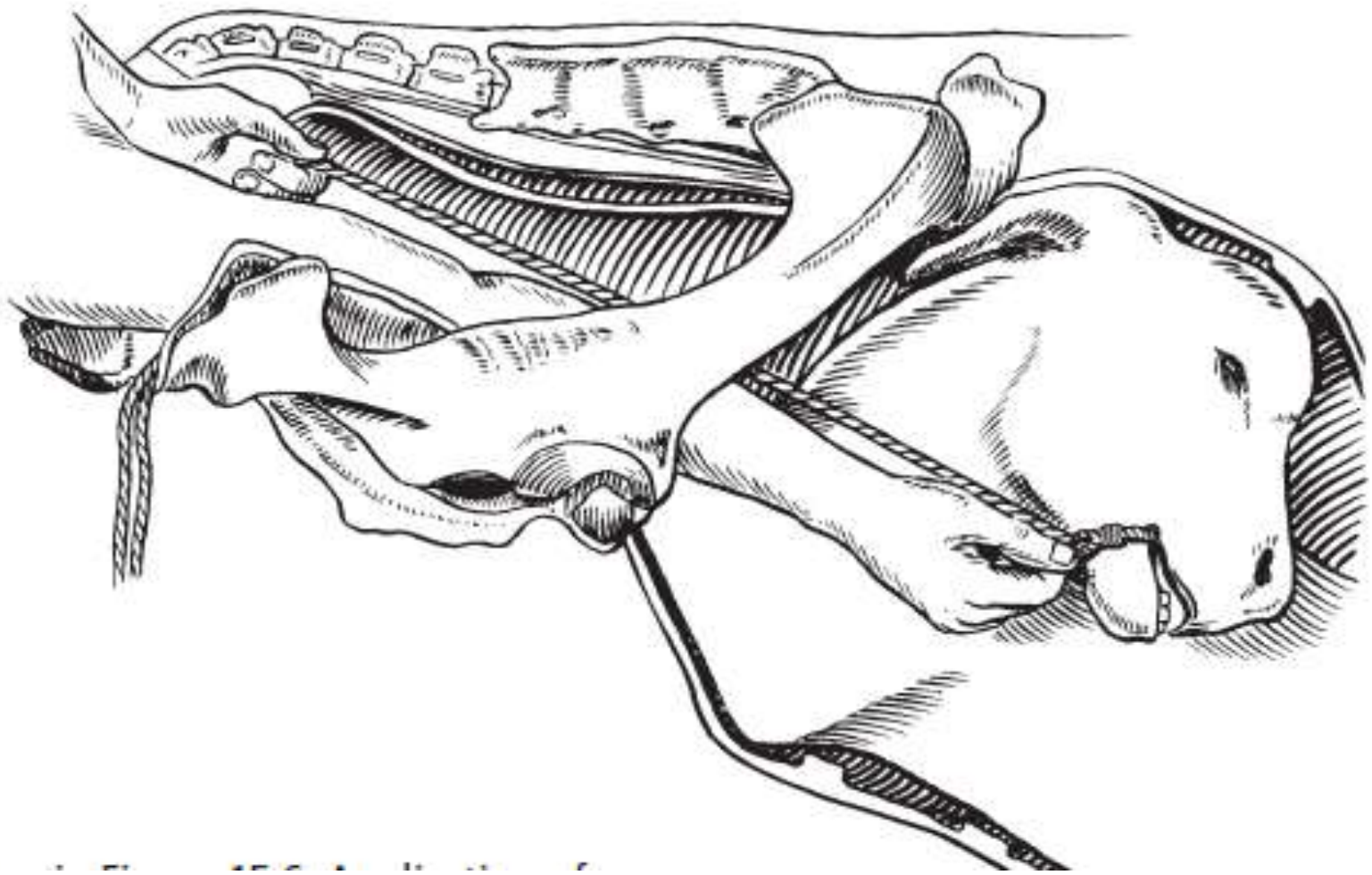


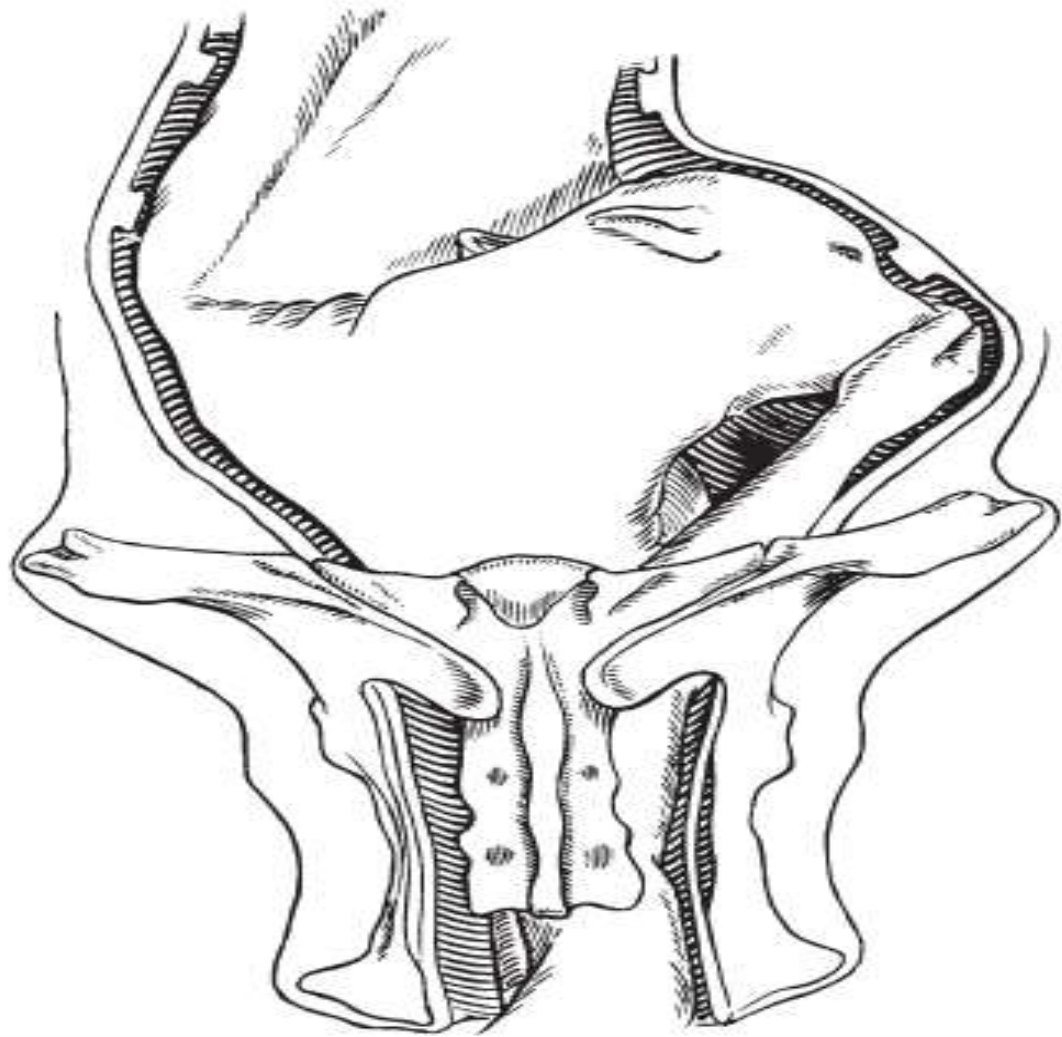
**Retropulsion:** mean pushing the fetus cranially from the vagina towards the uterus.

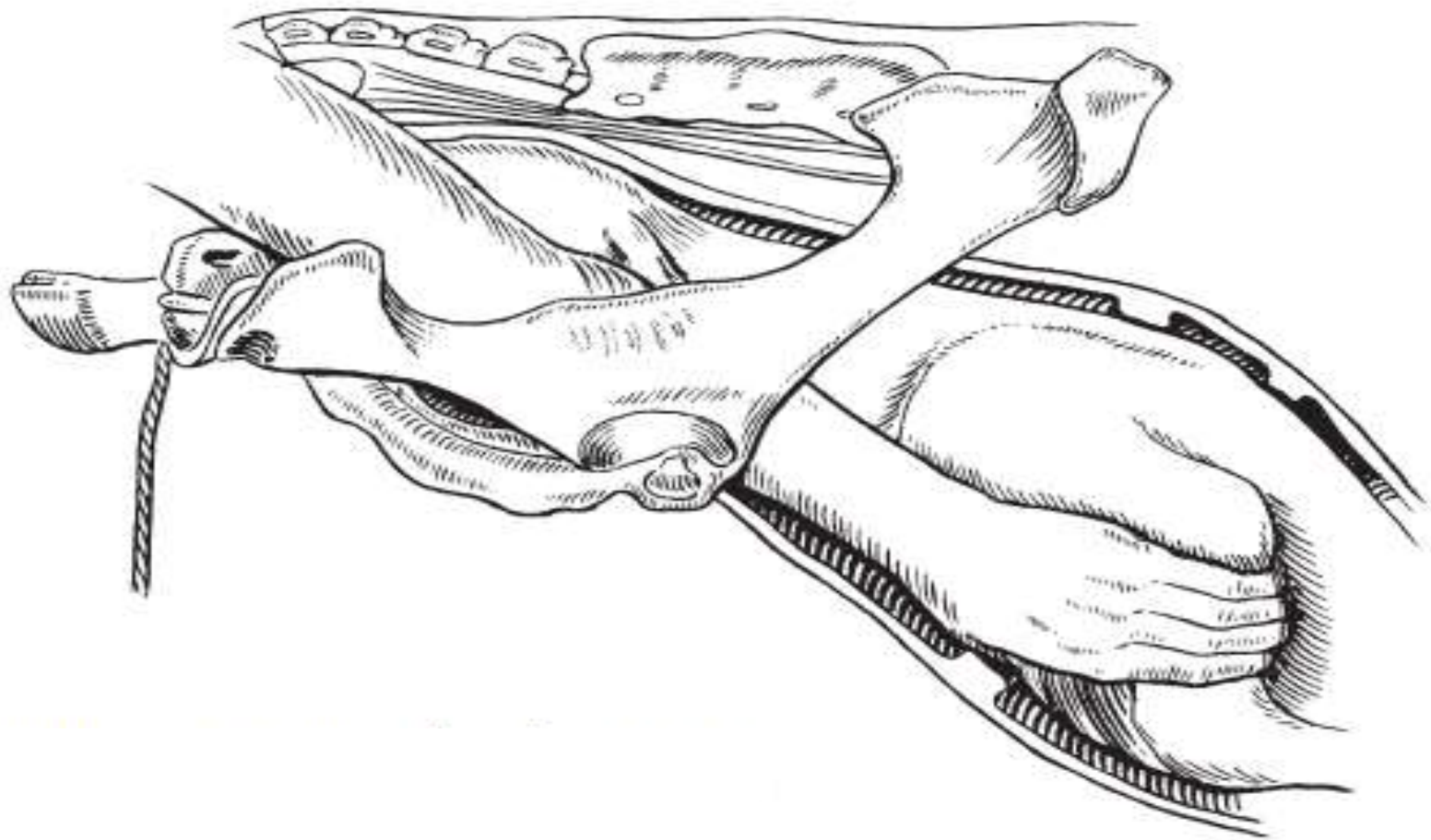


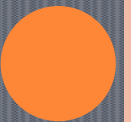
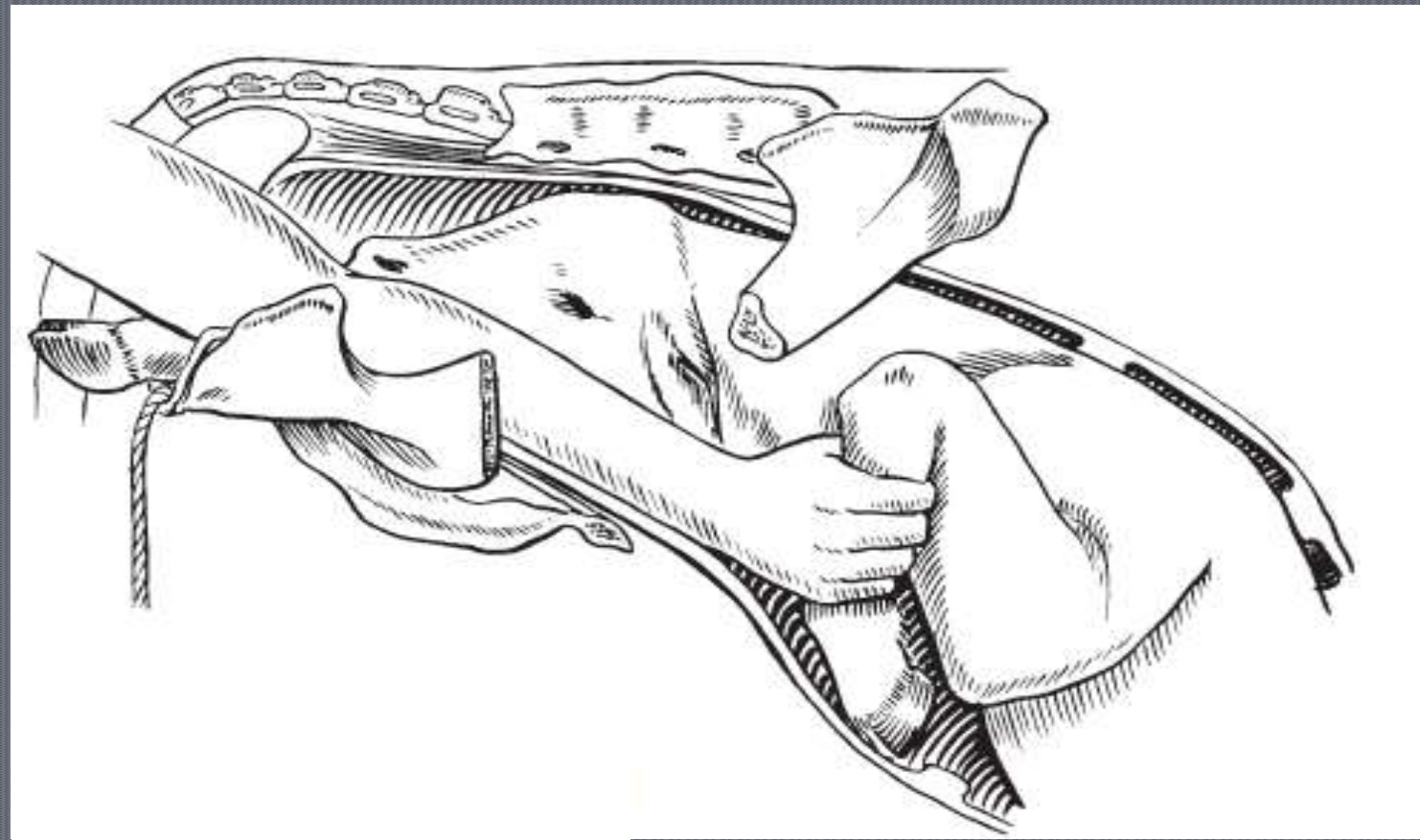






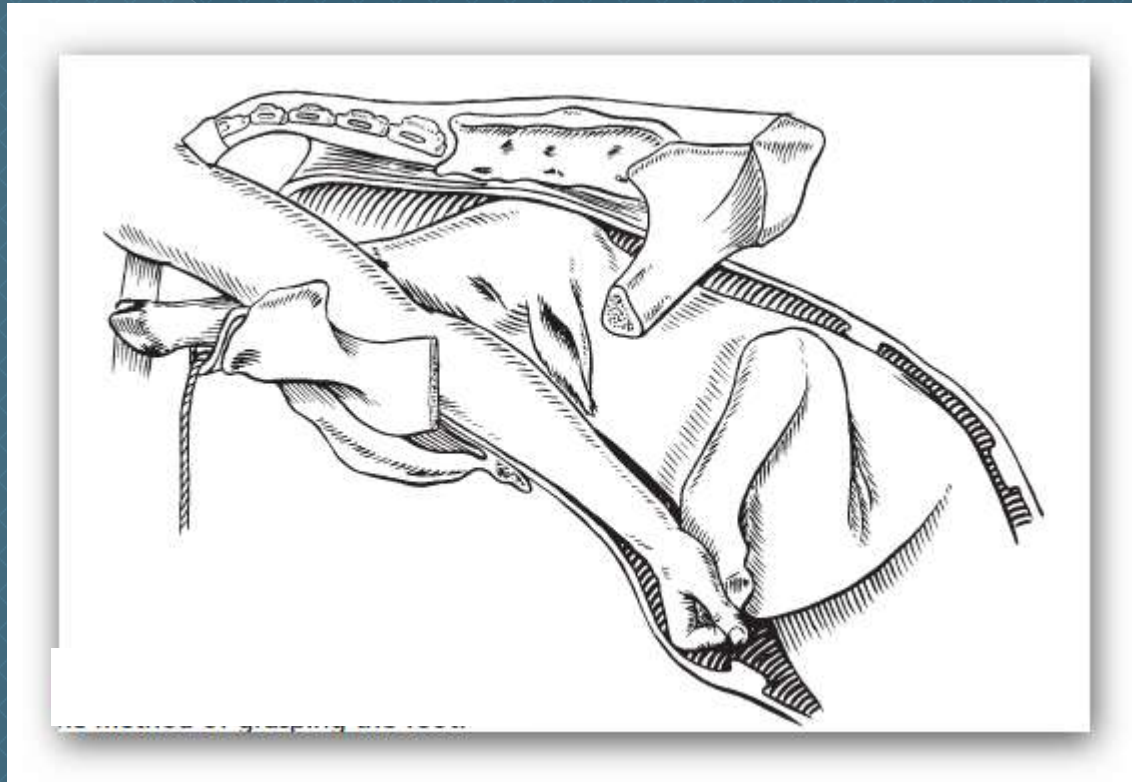


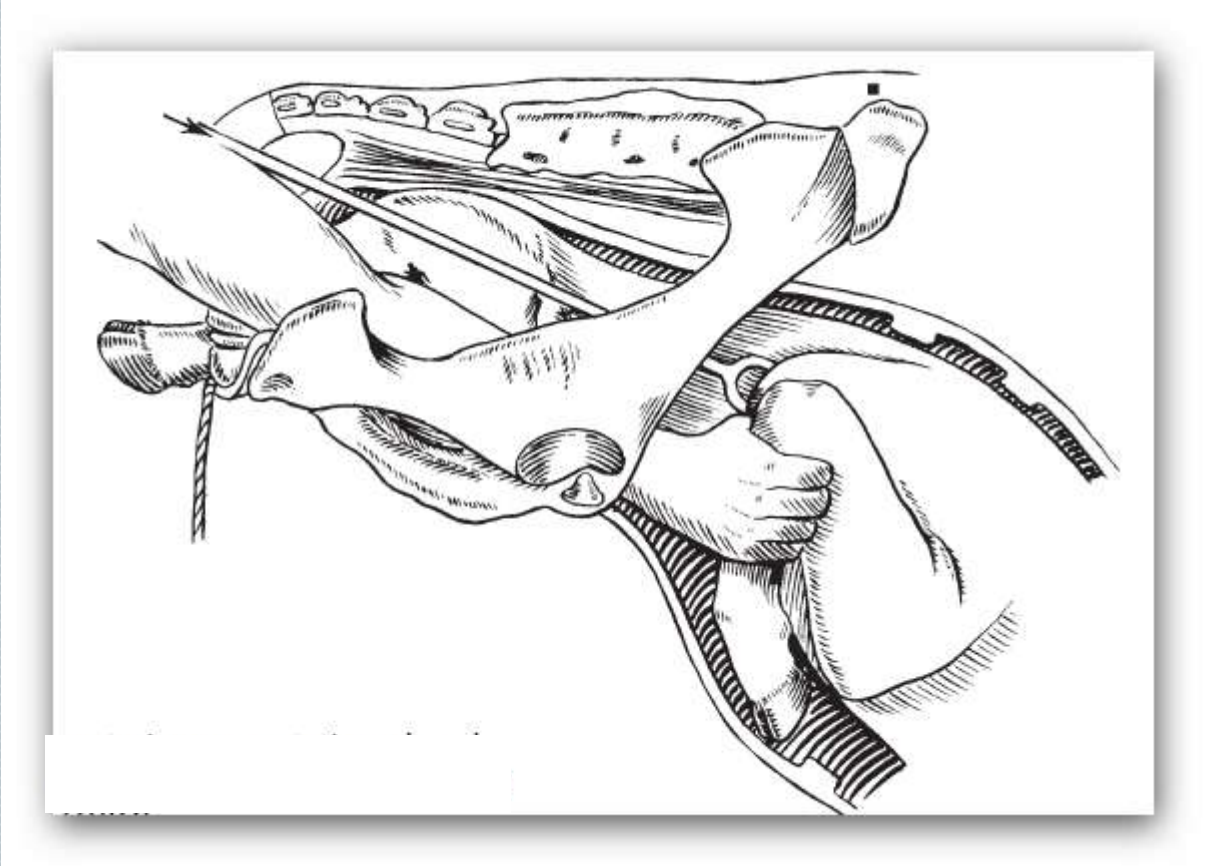


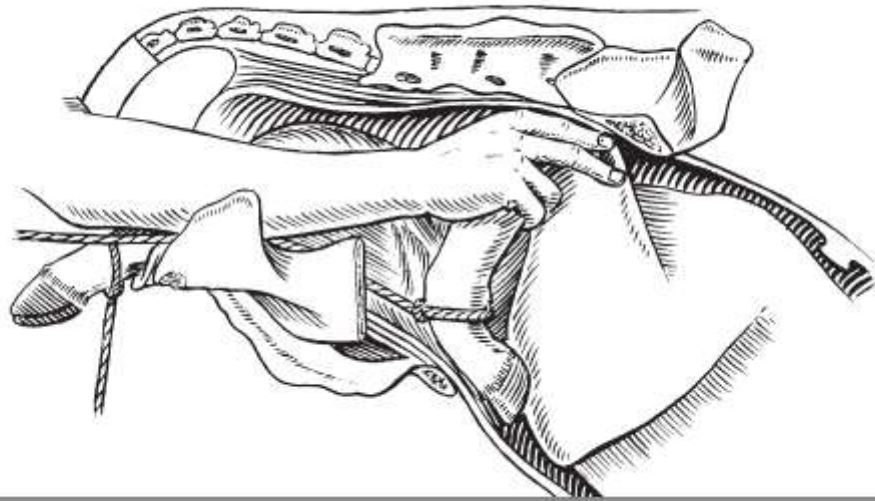




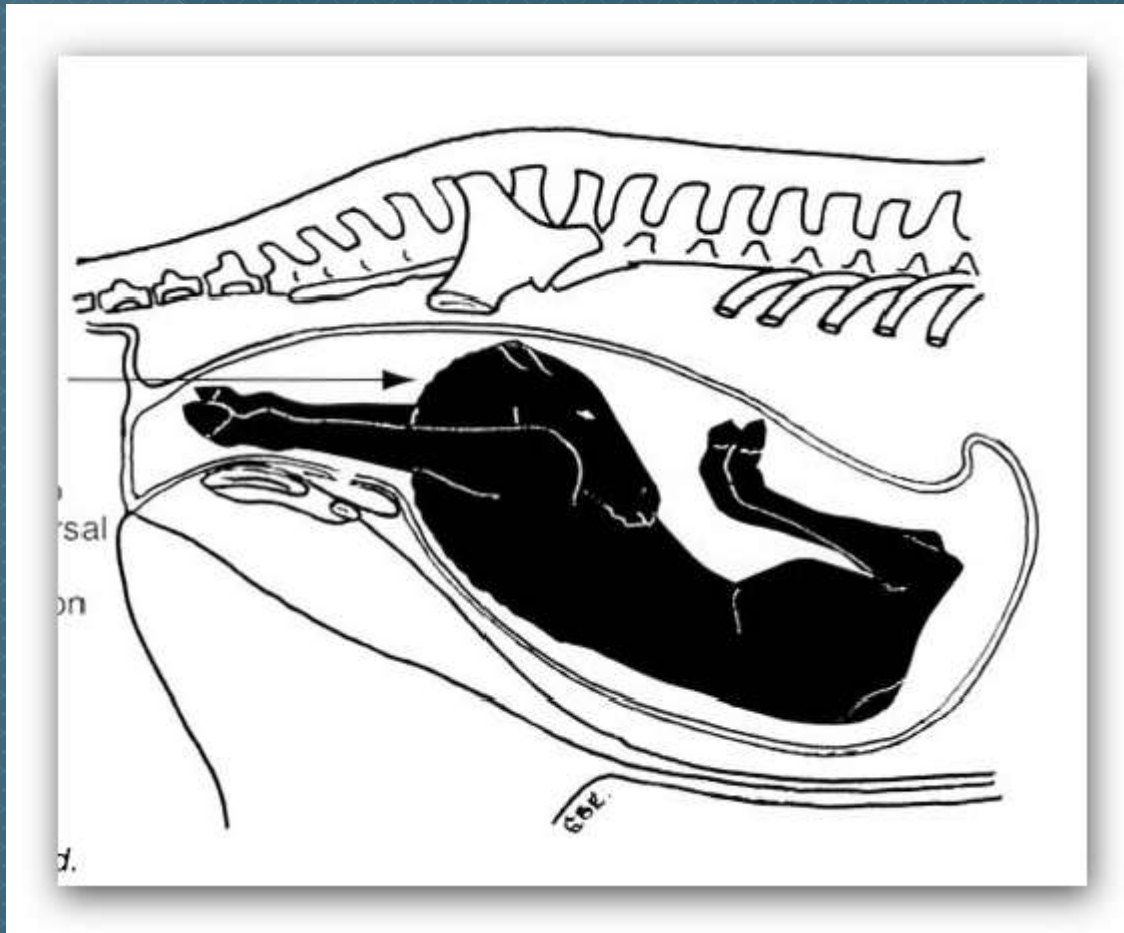
**Extension:** refer to extension of flexed joints when postural defect are present.





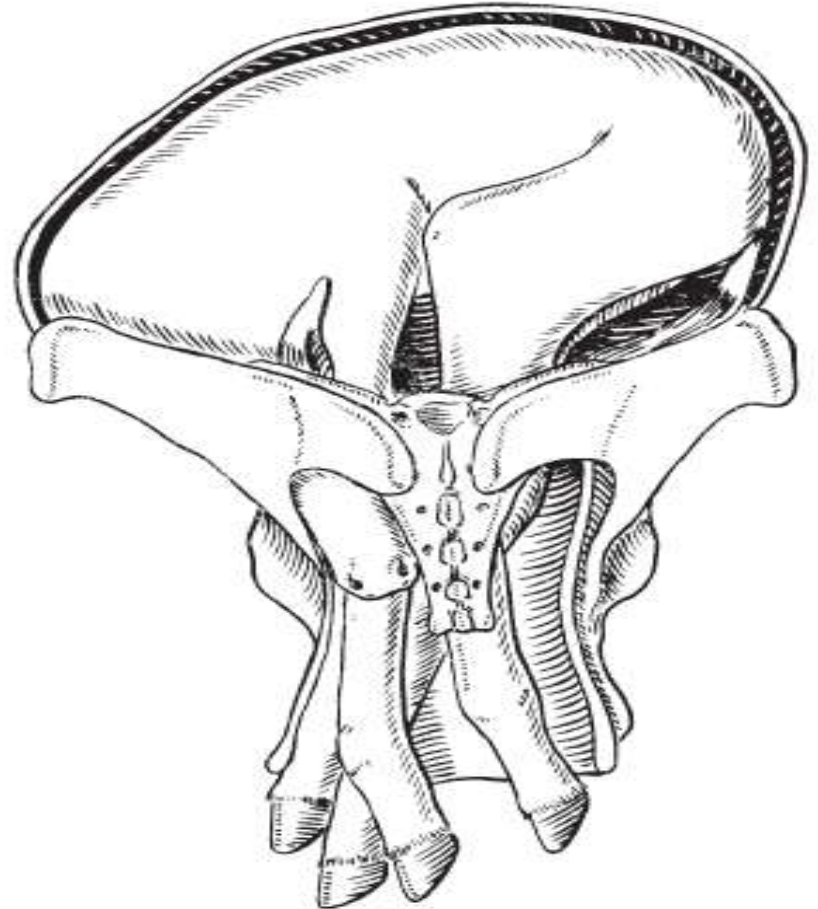
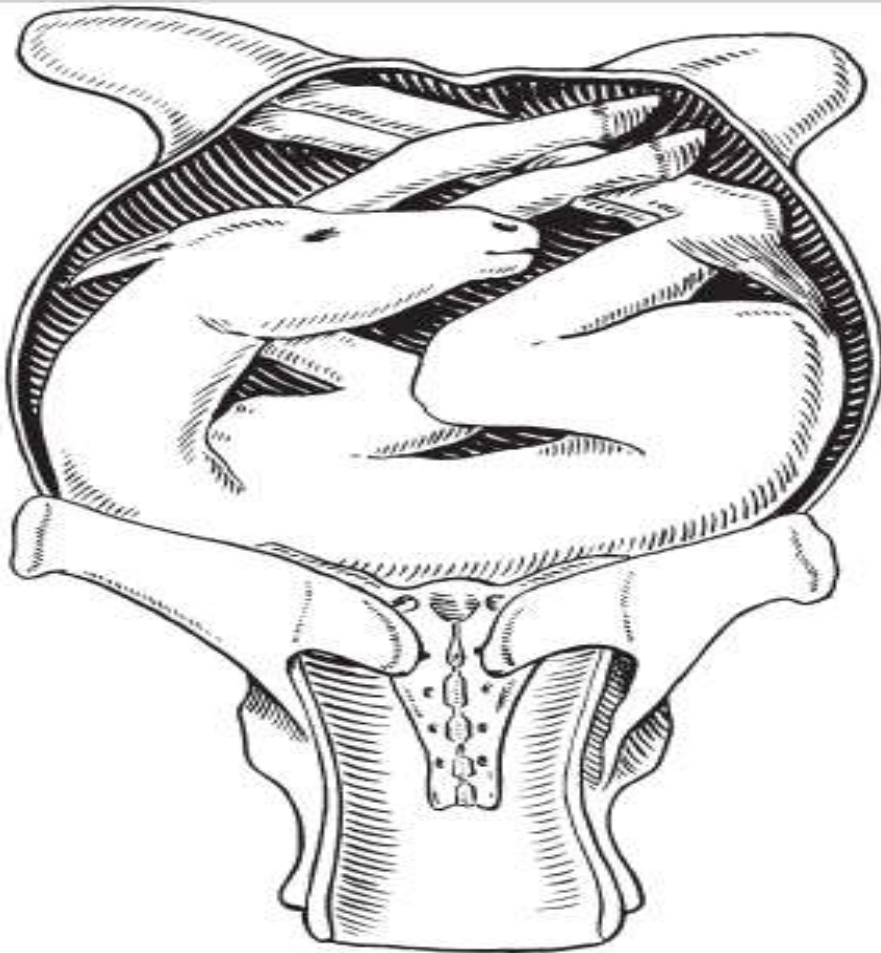


- **Rotation:** alteration of the position of a fetus by moving it around its longitudinal axes.





**Version**: alteration of transverse or vertical to longitudinal presentation.



**Traction:** means the application of force to the presenting parts of the fetus in order to supplement.



